

THE WHOLE NINE YARDS

ILLUSTRATED PT 658 NEWSPAPER



Est. 1945

Issue: One

Monday, 11 September

Price - expensive

MUSEUM NEWS

Speaking of which, did you know that the origin of the phrase “the whole nine yards” continues to be debated? Sure, most probably think of a machine gun belt, but the phrase was used long before machine guns to refer to fabric used in clothing (an 1855 newspaper article, “She has put the whole nine yards into one shirt”). Other references have been to ship rigging and sails, baseball, football, the volume of graves and concrete mixers, and story telling

Museum Receives Grant!

Barb B. reports that her efforts to secure a grant to the museum have been successful:

“The Kinsman Foundation has provided a generous grant to PT 658! Grant funds are being used to conserve, preserve and protect one-of-a-kind artifacts and memorabilia from WW II PT Boats and PT Boat Veterans. Artifacts are now on display or are stored in archives in the new museum in the PT boat shelter. Grant funds are paying for conservation supplies, acid-free boxes and sleeves to protect uniforms, documents, maps, etc. Glass cases are protecting artifacts accompanied by descriptive information. We deeply appreciate The Kinsman Foundation's support of our efforts to preserve these one-of-a-kind artifacts, and encourage everyone to visit and see first-hand this priceless collection.”

Facebook It!

The museum now has a Facebook page named “Save The PT Boat Inc. PT658 Museum WWII PT Boat”. It is in its beginnings and will be used to post museum news, photos, and developments. If you haven't seen it, there is another Facebook page called “WWII PT Boat Splinters” which is a site where sons and daughters of PTers post information regarding PT boats. The information is fascinating and often includes never before seen photos.



EXHIBITS AND COLLECTIONS

The museum, which a year and a half ago was an empty space filled with air, now sports a variety of exhibits. Although still evolving and being completed, they include presentations on V-mail, a base office, armament, bases of PT operations, daily life of PT crews with card game, a Pter biography, PT engines, famous PT boats and crews, PT658 restoration, Pearl Harbor, Higgins, and Walt Disney. The exhibits display many original WWII era artifacts which have been generously donated to the PT658 project by a number of individuals, or purchased by the project itself. Four of the exhibits have TVs showing photos and videos, the V-mail area has a small tablet to do the same.



The space also includes a small theater with a big screen TV so that visitors can watch promo videos as well as episodes of “Victory at Sea”, movies such as “They Were Expendable”, documentary films, and slide presentations. At the office area is a library and files containing various original PT boat related documents. One of the goals here is to amass a collections of materials that can be used to research PT boats and those who built, crewed and maintained them.

The museum has been prepped in a way that hopefully gives the feel of a WWII PT base, specifically Tulagi in the Solomon Islands. Each area is not intended to be static, but instead, able to change over time with the addition of new artifacts or complete displays. The Disney exhibit and the small wall used to tell the story of an individual Pter (up now is Dick Vaage) are examples of complete displays that will eventually be rotated out and replaced with new subject matter.

Currently undergoing construction is a timeline of PT involvement in WWII and the period 1938-1946. A series of panels along the walkway to the museum are being used to present each year with titles on each panel taken from books and episodes of “Victory at Sea”. A number of the panels have small tablets for showing photos and videos.

EXHIBITS AND COLLECTIONS



Pillow Case



Bob strolling along the timeline, you figure out which Bob

Donations to the museum don't just include grants. Artifacts, maps, and books are also given over to the facility. The most recent is a souvenir pillow case from the U.S. Navy's Sampson, New York training station with a PT boat on it. Pillow cases such as this were often given to a sailor's sweetheart, wife, or mother during WWII. The United States Naval Training Station in Sampson, New York facility was established initially by the United States Navy in 1942. The Navy obtained 2,600 acres of former farmland and also vineyards for the base on the east side of Lake Seneca, New York. Along with the training station, a 1500-bed hospital was constructed. The mission of USNTS Sampson was basic training for large numbers of new recruits. During the war, over 411,000 recruits were trained at the station. With the end of the war, USNTS Sampson was closed. The Station was used by the state of New York as a temporary college for 15,000 GI Bill students in July 1946. The museum has two other pillow cases which are included as part of the card game table set up on the museum's floor. They also include images of PT boats.

WHAT'S ON DECK FOR THE MUSEUM



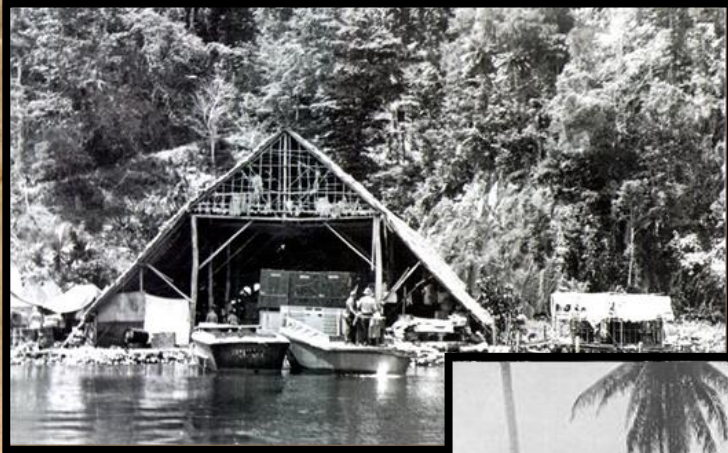
Then: There was no museum or enclosed repair facilities...



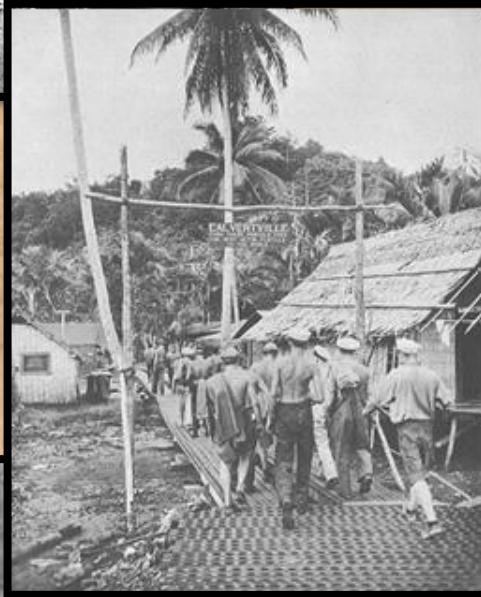
Now: Museum and repair facilities...

Priorities include finishing the timeline along the walkway to the entrance and completing the bases of operation exhibit. A library inventory is underway and new additions are being entered on spreadsheets, and paper artifacts are being sorted and placed in archival quality storage sleeves and boxes. A silhouette of a PT boat has just been added to the famous PT boats and PT crews wall and will display the numbers of those PT boats which were lost in action during WWII. Fifty-five gallons drums have been located so that one can be purchased and used to display a WWII hand crank gasoline pump like those used to refuel PT boats at bases during the war. In the library are a series of binders which now contain over 2,000 pages of information on every PT boat built in the U.S. during WWII. Many hours of research has gone into the binders which continue to grow as new information is found. Many of the pages have photographs of PT boats. A presentation kit is being assembled for use at meetings and events which will include a laptop loaded with PowerPoints, a projector, thumb drives, a voice recorder, a sound system, and extension cords. All of this can also be used in the museum which is equipped with a nice pull-down screen for large group presentations. All that's needed for this and the theater is popcorn! See Wally...

THE MUSEUM



Tulagi



Now: There is a museum!

A recent visitor remarked, “We’ve been to many museums in many places but this is the best one we’ve ever seen. It’s exceptional.”

An amazing amount of work has been accomplished by so many to get the museum constructed, up and running, and presentable. Congrats and many thanks to all who have donated their time and energy to the project, a job beyond well done!

